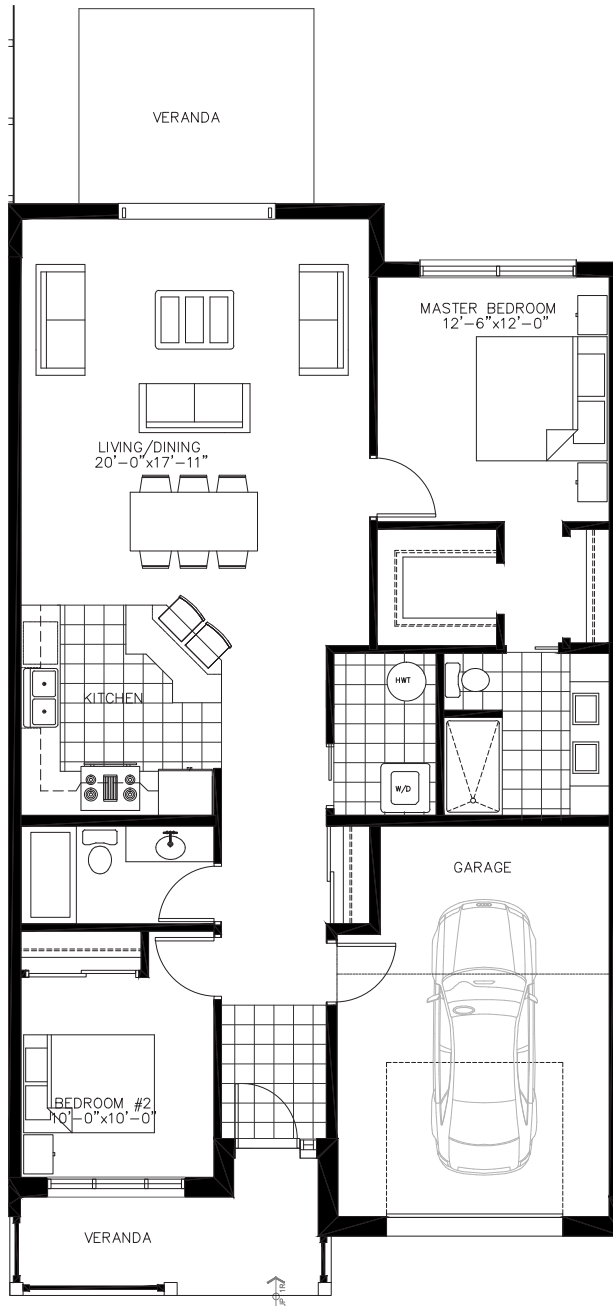


Osprey Lane (1-23): Unit 2

Two Bedroom Bungalow

Living Area: 1,262 sq.ft. | Total Area: 1,565 sq.ft.



NOTE: THESE AREAS ARE NOT BASED ON "AS BUILT" CONDITIONS. ACTUAL AREAS OF UNIT MAY VARY DUE TO SITE CONDITIONS AND CONSTRUCTION. AREA CALCULATIONS ARE BASED ON B.O.M.A. MEASUREMENT STANDARDS FROM CENTER OF PARTY WALL FROM BRICK TO FACE.



THE MAPLES
TOWNHOMES

Call: 1-902-735-2220

ANTIGONISH • NOVA SCOTIA

MaplesRetirement.ca