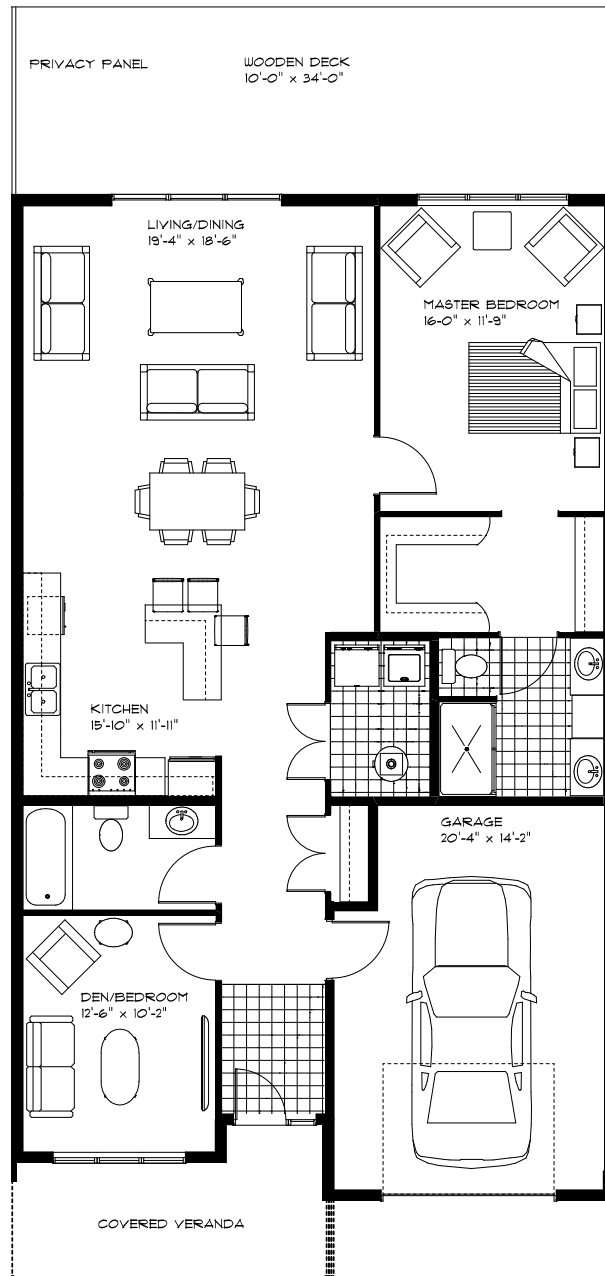


Osprey Lane (25-47): Unit 2

Two Bedroom Bungalow

Living Area: 1,260 sq.ft. | Total Area: 1,540 sq.ft.



NOTE: THESE AREAS ARE NOT BASED ON "AS BUILT" CONDITIONS. ACTUAL AREAS OF UNIT MAY VARY DUE TO SITE CONDITIONS AND CONSTRUCTION. AREA CALCULATIONS ARE BASED ON B.O.M.A. MEASUREMENT STANDARDS. FROM CENTER OF PARTY WALL FROM BRICK TO FACE.



Call: 1-902-735-2220

ANTIGONISH • NOVA SCOTIA

MaplesRetirement.ca